

Romanin - March 2020 BOUNDARY TREE INVENTORY											
Tree #	Nr. of trees	Botanical Name	Common name	DBH cm	Height m	Crown Ø (m)	Maturity	Health conditions	Location	Recommendations	
529	1	<i>Fraxinus americana</i>	White Ash	25	14	6	Mature	Fair/Poor	Forked at 6m	1m on adjacent land	Remove
530	1	<i>Picea glauca</i>	White Spruce	14	7	4	Immature	Fair/Good		0.6m on adjacent land	Preserve
531	1	<i>Abies balsamea</i>	Balsam Fir	21	12	5	Mature	Good		1m on adjacent land	Preserve
532	1	<i>Tilia americana</i>	Basswood	26	14	5	Mature	Fair	Midstem	0.7m on adjacent land	Preserve
533	2	<i>Populus tremuloides</i>	Trembling Aspen	29	14	6	Mature	Fair		1.6m on adjacent land	Preserve
534	1	<i>Fraxinus americana</i>	White Ash	20	12	4	Mature	Fair/Poor		1.2m on adjacent land	Preserve
535	1	<i>Thuja occidentalis</i>	Eastern White Cedar	23	10	4	Mature	Fair/Poor	Leaning on site	0.5m on adjacent land	Preserve
536	1	<i>Abies balsamea</i>	Balsam Fir	26	14	6	Mature	Fair/Poor	Dieback in canopy	on site	Remove
537	1	<i>Fraxinus americana</i>	White Ash	25	14	6	Mature	Fair/Poor		on site	Remove
538	1	<i>Abies balsamea</i>	Balsam Fir	22	12	4	Mature	Fair		on site	Remove
538	1	<i>Tilia americana</i>	Basswood	34	12	6	Mature	Fair		on site	Remove
539	1	<i>Thuja occidentalis</i>	Eastern White Cedar	26	12	4	Mature	Fair/Poor	Leaning on site	on site	Remove
540	3	<i>Abies balsamea</i>	Balsam Fir	20-27	12	4	Mature	Good		0.8 on adjacent land	Preserve
541	1	<i>Pinus strobus</i>	Eastern White Pine	60	16	8	Mature	Fair	Specimen tree	3.2 on adjacent land	Preserve
542	1	<i>Quercus rubra</i>	Red Oak	26	10	5	Mature	Fair		1.6m on adjacent land	Preserve
543	2	<i>Fraxinus americana</i>	White Ash	35	12	7	Mature	Fair		0.5m on site	Preserve
546	1	<i>Picea glauca</i>	White Spruce	28	12	5	Mature	Good		adjacent land	Preserve
547	1	<i>Pinus strobus</i>	Eastern White Pine	49	14	7	Mature	Good	Specimen tree	block 46	Conditional preservation
548	1	<i>Picea glauca</i>	White Spruce	32	12	4	Mature	Good		adjacent land	Preserve
549	1	<i>Pinus strobus</i>	Eastern White Pine	30	12	6	Mature	Good		adjacent land	Preserve
550	1	<i>Picea abies</i>	Norway Spruce	44	12	9	Mature	Good		4.2m on adjacent land	Preserve
551	2	<i>Pinus strobus</i>	Eastern White Pine	±30	12	7	Mature	Good		2.5m on adjacent land	Preserve
552	1	<i>Populus tremuloides</i>	Trembling Aspen	20	10	5	Mature	Good		1.2m on adjacent land	Preserve
553	1	<i>Populus tremuloides</i>	Trembling Aspen	20	10	5	Mature	Good		1.2m on adjacent land	Preserve
554	1	<i>Betula papyrifera</i>	White Birch	20	12	4	Mature	Good	Clump	1m on adjacent land	Preserve
555	2	<i>Thuja occidentalis</i>	Eastern White Cedar	20	8	4	Mature	Fair/Good		on PL	Preserve
556	1	<i>Picea glauca</i>	White Spruce	18	8	4	Immature	Fair/Good		0.3m on adjacent land	Preserve
556	2	<i>Thuja occidentalis</i>	Eastern White Cedar	15	6	3	Immature	Fair		0.5m on adjacent land	Preserve
557	1	<i>Thuja occidentalis</i>	Eastern White Cedar	20	10	5	Mature	Fair		1m on adjacent land	Preserve
558	1	<i>Thuja occidentalis</i>	Eastern White Cedar	15	8	3	Immature	Fair		on PL	Preserve
559	1	<i>Pinus strobus</i>	Eastern White Pine	48	16	7	Mature	Good		on site	Remove
560	1	<i>Thuja occidentalis</i>	Eastern White Cedar	19	8	4	Immature	Fair		on site	Remove
560	1	<i>Thuja occidentalis</i>	Eastern White Cedar	20	8	7	Mature	Poor	Clump, Leaning	2.5m on adjacent land	Remove
561	1	<i>Abies balsamea</i>	Balsam Fir	20	8	3	Mature	Good		1.2m on adjacent land	Preserve
562	1	<i>Abies balsamea</i>	Balsam Fir	23	10	4	Mature	Fair		0.2m on adjacent land	Preserve
563	2	<i>Picea glauca</i>	White Spruce	28/20	12	5	Mature	Fair		1m on adjacent land	Preserve
564	1	<i>Abies balsamea</i>	Balsam Fir	20	10	5	Mature	Good		0.7m on adjacent land	Preserve
564	2	<i>Fraxinus americana</i>	White Ash	18/15	12	5	Mature	Fair		0.4m on adjacent land	Preserve
565	1	<i>Fraxinus americana</i>	White Ash	16	12	4	Immature	Fair		0.4m on adjacent land	Preserve
565	1	<i>Populus tremuloides</i>	Trembling Aspen	25	12	6	Mature	Fair		1.9m on adjacent land	Preserve
642	1	<i>Fraxinus americana</i>	White Ash	35	12	6	Mature	Fair		1m on adjacent land	Remove
643	1	<i>Thuja occidentalis</i>	Eastern White Cedar	42	8	5	Mature	Poor	broken leader	0.5m on adjacent land	Remove
644	3	<i>Thuja occidentalis</i>	Eastern White Cedar	19	12	5	Immature	Fair		0.5m on adjacent land	Remove
645	1	<i>Fraxinus americana</i>	White Ash	19	12	6	Immature	Fair		0.2m on adjacent land	Remove
646	1	<i>Abies balsamea</i>	Balsam Fir	12	12	3	Immature	Fair		0.7m on adjacent land	Preserve
647	1	<i>Thuja occidentalis</i>	Eastern White Cedar	18	10	4	Immature	Fair-good		1.3m on adjacent land	Preserve
648	1	<i>Thuja occidentalis</i>	Eastern White Cedar	14	10	4	Immature	Fair-good		1.0m on adjacent land	Preserve
649	1	<i>Pinus sylvestris</i>	Scots Pine	17	12	5	Immature	Fair-good		1.5m on adjacent land	Preserve
650	1	<i>Picea glauca</i>	White Spruce	11	10	3	Immature	Good		0.1m on adjacent land	Remove
652	1	<i>Thuja occidentalis</i>	Eastern White Cedar	27	12	4	Mature	Fair-good		1.9m on adjacent land	Preserve

THE INTENT OF TREE PRESERVATION AND PROTECTION IS TO PROVIDE AN INVENTORY OF EXISTING TREES ON SITE. IT IS NOT A SURVEY AND THEREFORE THE EXACT LOCATION OF EXISTING TREES MUST BE VERIFIED ON SITE PRIOR TO THE COMMENCEMENT OF ANY CONSTRUCTION WORKS.

ALL TREES TO BE PRESERVED SHALL BE INDICATED AND MARKED AS SUCH ON SITE BY THE LANDSCAPE ARCHITECT PRIOR TO THE SITE DEVELOPMENT.

AS PART OF THE CLEARING AND GRUBBING, TREES LOCATED AT THE EDGES OF STANDS ABUTTING RESIDENTIAL ARE ARE TO BE PRUNED OF DEAD AND DISEASED LIMBS. PRUNING TO BE COMPLETED IN ACCORDANCE TO ACCEPTED HORTICULTURAL PRACTICES AND TO THE SATISFACTION OF THE LANDSCAPE ARCHITECT.

IN THE EVENT THAT A TREE THAT HAS BEEN DESIGNATED FOR PRESERVATION IS DAMAGED OR REMOVED WITHOUT PRIOR WRITTEN PERMISSION FROM THE TOWN, THE LAND OWNER SHALL BE RESPONSIBLE FOR THE REPLACEMENT OF SAID TREE WITH TREES OF EQUAL CALIBER VALUE AND COMPARABLE SPECIES, TO THE SATISFACTION OF THE TOWN AND THE LANDSCAPE ARCHITECT.

SPECIFICATIONS FOR PRESERVATION & PROTECTION

PRIOR TO THE COMMENCEMENT OF ANY CONSTRUCTION WORKS, ALL TREES OR BLOCKS OF TREES THAT HAVE BEEN DESIGNATED FOR PRESERVATION, AS INDICATED ON THE ACCOMPANYING PLAN SHALL BE FULLY PROTECTED BY THE ERECTION OF HOARDING OUTSIDE OF OR AT THE DRIP LINE (SEE DETAIL). AREAS WITHIN THE HOARDING SHALL BE CLEARED AND GRUBBED ONLY UNDER THE WRITTEN DIRECTION AND SUPERVISION OF THE LANDSCAPE ARCHITECT.

EQUIPMENT OR VEHICLES SHALL NOT BE PARKED, REPAIRED OR REFUELED WITHIN TREE PROTECTION ZONE, CONSTRUCTION MATERIALS SHALL NOT BE STORED AND EARTH MATERIALS SHALL NOT BE STOCKPILED WITHIN THE DRIP LINE AREA OF ANY TREE NOT DESIGNATED FOR REMOVAL.

ANY TREES NOT DESIGNATED FOR REMOVAL SHALL NOT HAVE RIGGING CABLES ATTACHED OR WRAPPED AROUND THEM NOR SHALL ANY CONTAMINANTS BE DUMPED WITHIN THE PROTECTIVE AREAS. FURTHER, NO CONTAMINANTS SHALL BE DUMPED OR FLUSHED WHERE THEY MAY COME INTO CONTACT WITH THE FEEDER ROOTS OF THE TREES TO BE PRESERVED.

THE CONTRACTOR OR LAND OWNER SHALL TAKE EVERY PRECAUTION TO PREVENT DAMAGE TO TREES OR SHRUBS THAT ARE NOT DESIGNATED FOR REMOVAL AS PER THE ACCOMPANYING PLAN.

UNLESS THE CONTRACT WORK SPECIFICALLY REQUIRES WORK WITHIN THE DRIP LINE OF TREES NOT DESIGNATED FOR REMOVAL, EQUIPMENT SHALL NOT BE OPERATED WITHIN THAT DRIP LINE AREA. WHEN CONTRACT WORK MUST BE COMPLETED WITHIN THE DRIP LINE OF TREES NOT DESIGNATED FOR REMOVAL, OPERATION OF EQUIPMENT WITHIN THAT DRIP LINE SHALL BE KEPT TO THE MINIMUM AMOUNT REQUIRED TO COMPLETE THE WORKS. PRIOR TO THE COMMENCEMENT OF SUCH WORKS THE LANDSCAPE ARCHITECT MUST BE GIVEN WRITTEN NOTIFICATION AND WILL SUBSEQUENTLY BE REQUIRED TO INSPECT SAID WORKS.

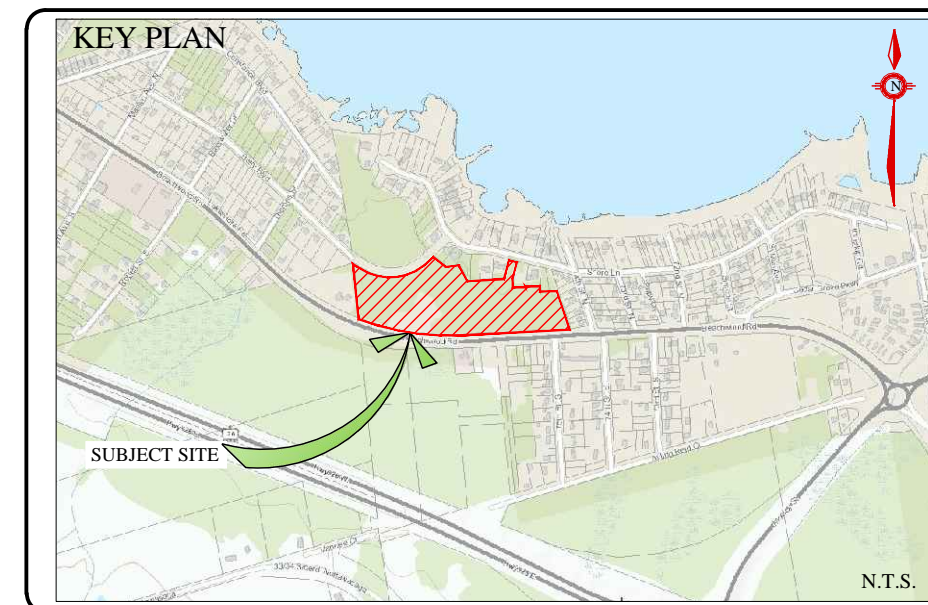
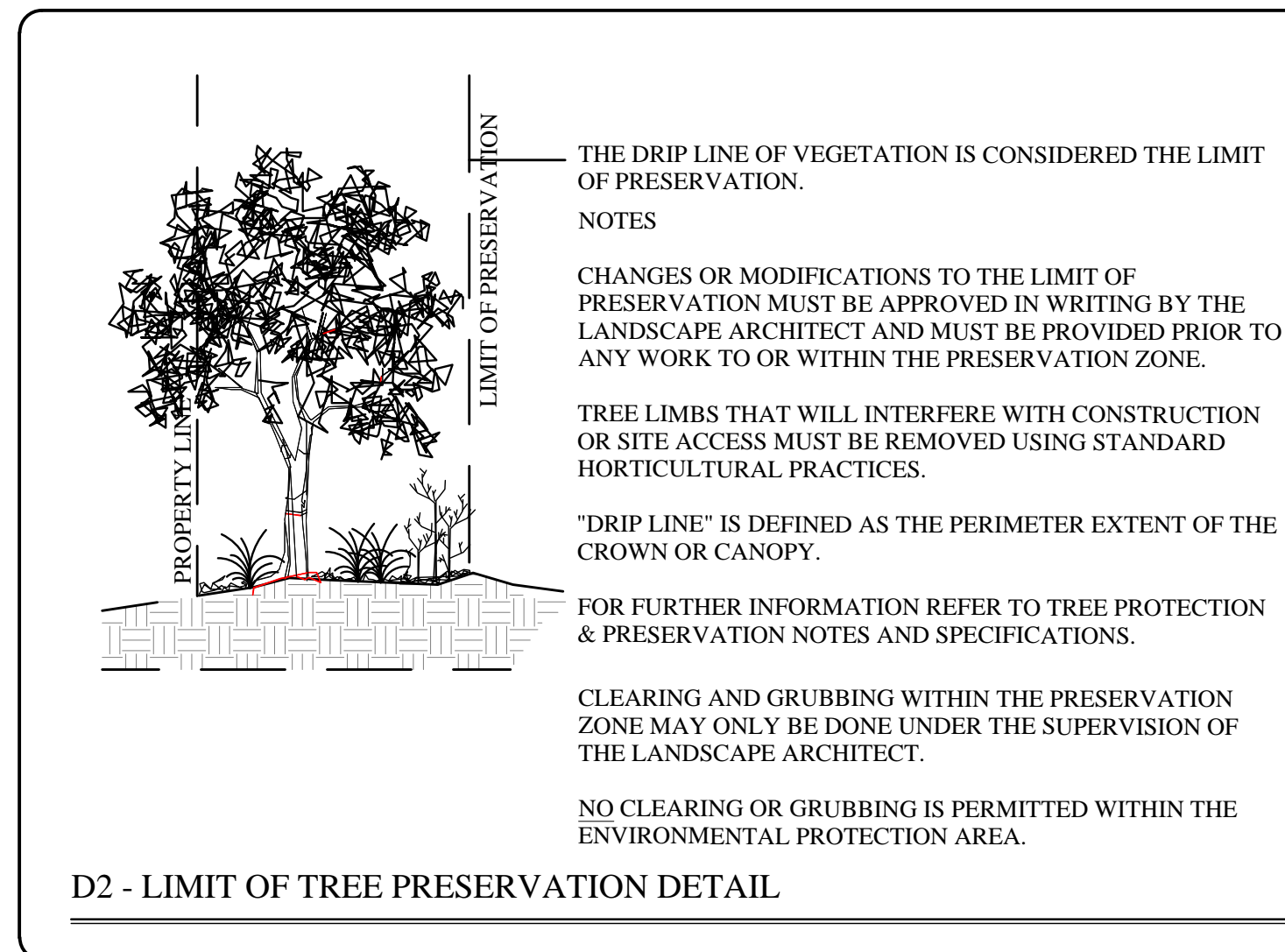
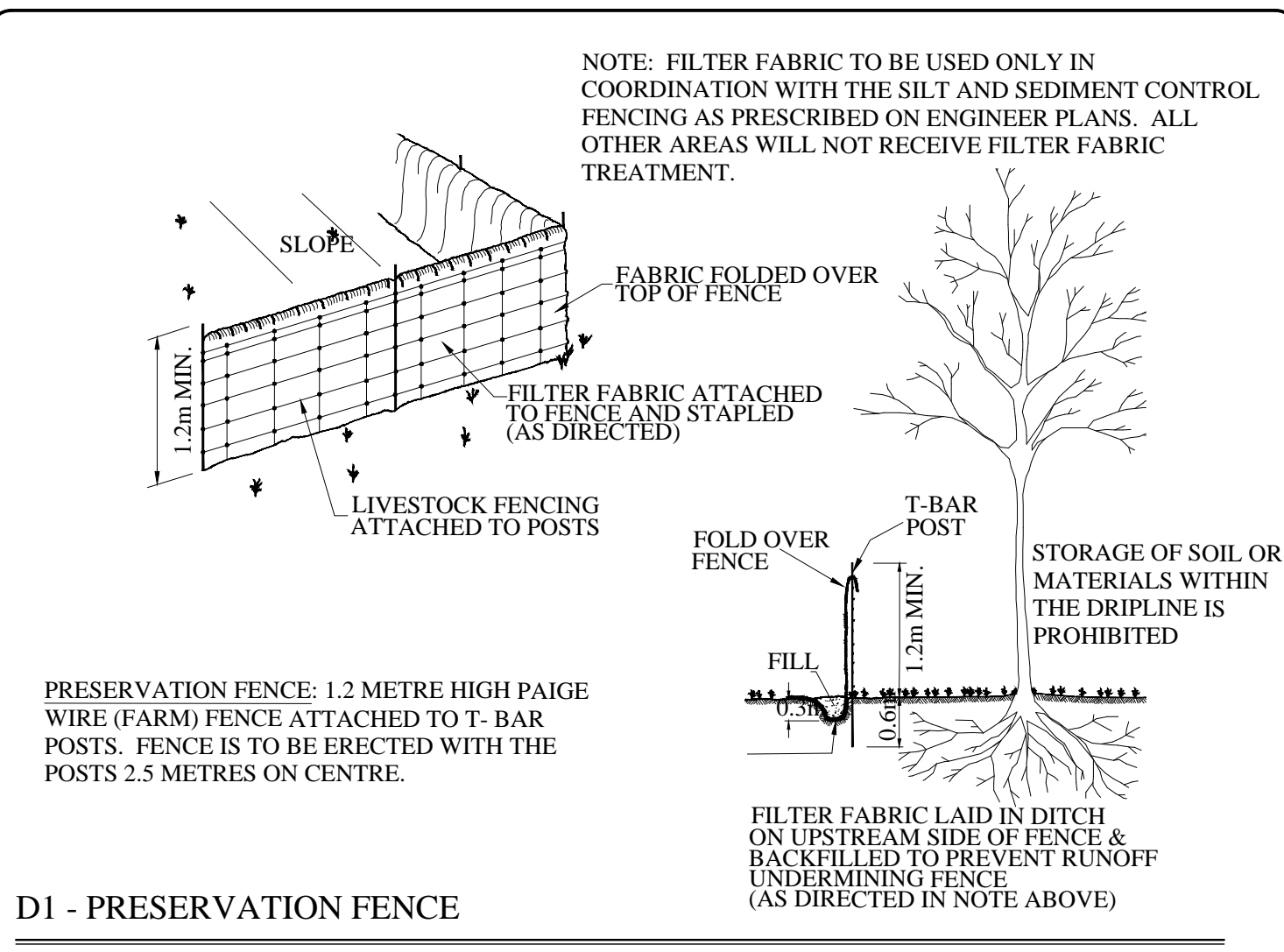
THE CONTRACTOR'S OPERATION SHALL IN NO WAY CAUSE DAMAGE TO THE TRUNK OR BRANCHES OF TREES NOT DESIGNATED FOR REMOVAL.

THE CONTRACTOR'S OPERATION SHALL NOT CAUSE FLOODING OR SEDIMENT DEPOSITS IN AREAS WHERE TREES ARE NOT DESIGNATED FOR REMOVAL.

IN THE EVENT THAT IT IS NECESSARY TO REMOVE LIMBS OR PORTIONS OF TREES NOT DESIGNATED FOR REMOVAL, WRITTEN APPROVAL AND DIRECTION MUST BE GIVEN BY THE LANDSCAPE ARCHITECT PRIOR TO ANY WORKS. THE REMOVALS MUST BE EXECUTED CAREFULLY AND IN ACCORDANCE WITH STANDARD HORTICULTURAL PRACTICES AND TECHNIQUES.

NO GRADING SHALL TAKE PLACE WITHIN THE PRESERVATION ZONE.

D3 - NOTES FOR PRESERVATION AND PROTECTION



GENERAL NOTES

CONTRACTOR IS RESPONSIBLE FOR ALL LOCATES INCLUDING ALL UNDERGROUND SERVICES PRIOR TO ANY EXCAVATION OR INSTALLATIONS.

ANY ACCOMPANYING DOCUMENTATION RELATING TO THE PRESERVATION PLAN SUCH AS TENDER DOCUMENTS AND CHANGE NOTICES ARE TO BE ENDORSED BY JOHN D. BELL ASSOCIATES LIMITED PRIOR TO THE BEGINNING OF ANY SITE WORKS. IN THE EVENT THAT OF A DISCREPANCY THE DRAWING SHALL BE ASSUMED CORRECT.

IT IS THE RESPONSIBILITY OF THE PERSON OR PERSONS RESPONSIBLE FOR THE CONSTRUCTED WORKS TO NOTIFY THE LANDSCAPE ARCHITECT, A MINIMUM OF 48 HOURS PRIOR, FOR ANY REQUIRED INSPECTIONS AND SIGN OFFS.

SCHEDULED MEETINGS SHALL TAKE PLACE AT THE CLOSEST MUTUALLY CONVENIENT TIME. LAYOUT AND INSTALLATION OF PROTECTIVE HOARDING WITHOUT THE PRESENCE OF THE LANDSCAPE ARCHITECT WILL BE THE CONTRACTOR'S RESPONSIBILITY. THE LANDSCAPE ARCHITECT RESERVES THE RIGHT TO HAVE TREE PRESERVATION FENCE RELOCATED WHETHER INSTALLED OR NOT AT THE COST OF THE CONTRACTOR IN THE EVENT THE LANDSCAPE ARCHITECT WAS NOT PRESENT FOR THE LAYOUT AND INSTALLATION OF THE PROTECTIVE TREE PRESERVATION FENCE.

ALL DRAWINGS AND SPECIFICATIONS ARE INSTRUMENTS OF SERVICE AND ARE THE PROPERTY OF J. D. B. ASSOCIATES LIMITED. DRAWINGS ARE NOT TO BE MODIFIED AND/OR REPRODUCED WITHOUT THE WRITTEN CONSENT OF J.D.B. ASSOCIATES LIMITED. REPRODUCTION OF DRAWINGS IN ANY FORM WITHOUT THE CONSENT OF J.D.B. ASSOCIATES LIMITED VIOLATES THE DRAWING AT WHICH TIME J.D.B. ASSOCIATES LIMITED ACCEPTS NO LIABILITY FOR THE DRAWING CONTENT OR WORKS RESULTING FROM SAID REPRODUCTION. DRAWINGS MAY BE REPRODUCED BY MUNICIPAL AND GOVERNMENT AGENCIES RESPONSIBLE FOR APPROVALS FOR THEIR OWN USE. J. D. B. ASSOCIATES RESERVES THE RIGHT TO WITHDRAW ANY DRAWINGS FROM GOVERNMENT OR MUNICIPAL AGENCIES WHETHER APPROVED OR NOT IN THE EVENT THAT ACCOUNTS ARE NOT SETTLED OR REMAIN OUTSTANDING.

IT IS THE RESPONSIBILITY OF THE CONTRACTOR TO VERIFY ALL DIMENSIONS ON THE SITE AND REPORT ANY DISCREPANCIES OR VARIATIONS FROM THE SUPPLIED INFORMATION TO THE LANDSCAPE ARCHITECT WITH THE PROJECT. J. D. B. ASSOCIATES LIMITED IS NOT RESPONSIBLE FOR THE ACCURACY OF SURVEY, ARCHITECTURAL, MECHANICAL, ENGINEERING OR ELECTRICAL INFORMATION SHOWN ON THE DRAWING. FOR FURTHER INFORMATION REFER TO APPROPRIATE SURVEY, ARCHITECTURAL, MECHANICAL, ENGINEERING OR ELECTRICAL DRAWINGS PRIOR TO PROCEEDING WITH ANY WORKS.

THIS DRAWING IS NOT TO BE SCALED.

TOWN ACCEPTED FOR CONSTRUCTION

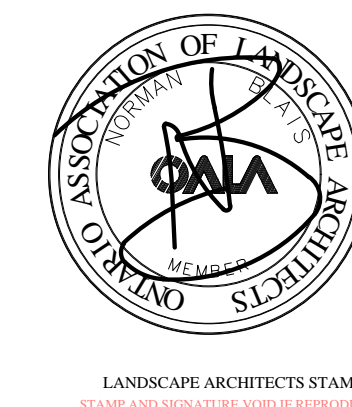
TOWN OF WASAGA BEACH DEV. ENGINEERING

DATE: _____

TOWN ACCEPTED FOR CONSTRUCTION

TOWN PEER REVIEW ENGINEER

DATE: _____



JDB ASSOCIATES LTD.			
Urban Designers Landscape Architects Arborsists			
274 Barton Ave., Suite 1201 Barrie, Ontario L4N 5W4			
Fax: 705-722-5660 Tel: 705-722-6278			
No.	REVISION	DATE	APRVD.
1.	CLIENT REVIEW	March 18, 2020	ST

BEACHWOOD DEVELOPMENT INC.

Part of Lot 34, Concession 3
WASAGA BEACH, ONTARIO

TREE INVENTORY LIST & PRESERVATION DETAILS

TOWN FILE REF. #	PLOT DATE: March 17, 2020	DESIGNED BY: S.T.M.C.	REVIEWED BY: N.B.
SCALE: NTS	OUR FILE REF. # 5-20	DRAWN BY: S.T.M.C.	TP-2