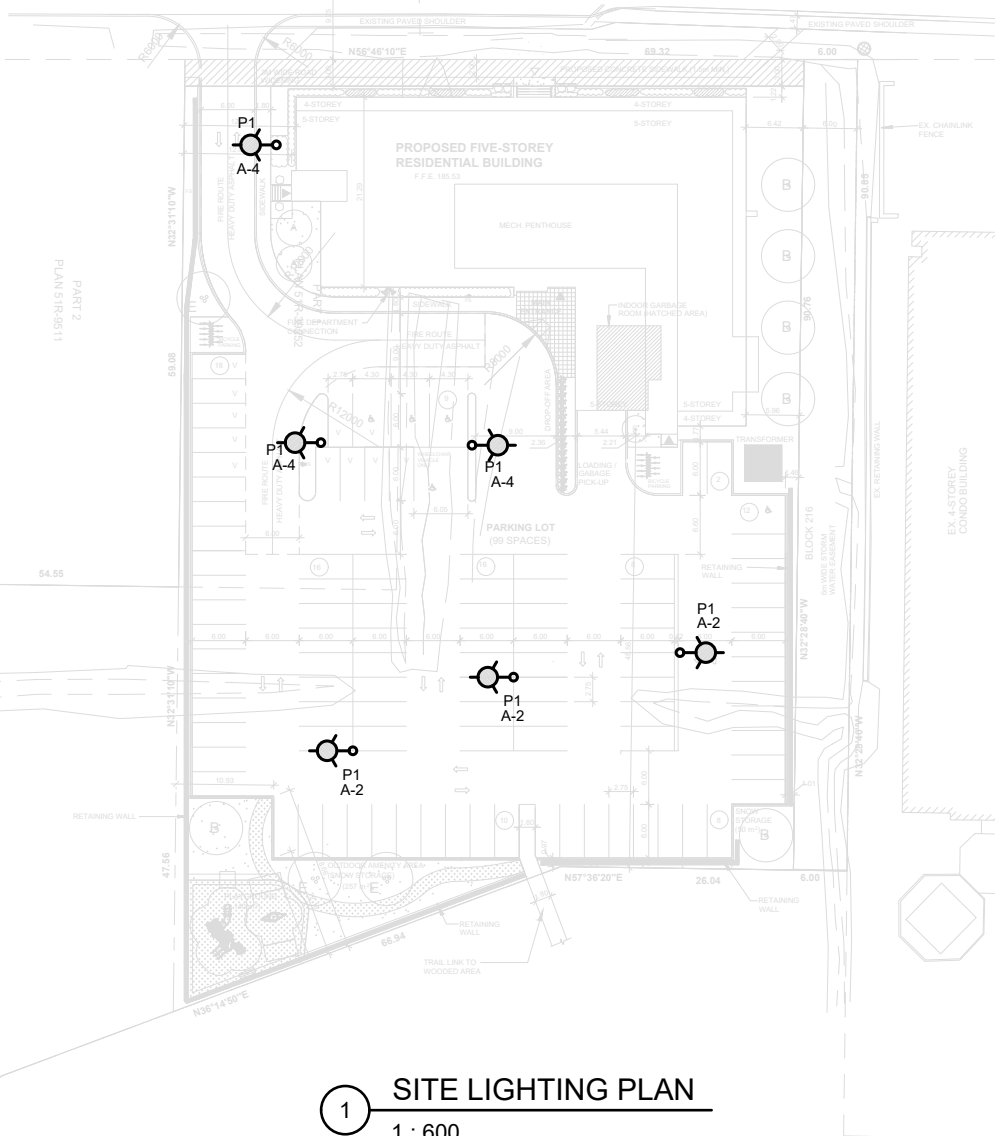


KNOWN AS RIVER ROAD WEST RIVER ROAD WEST



1 SITE LIGHTING PLAN  
1 : 600

- DRAWING NOTES:**
1. ALL LIGHTING FIXTURES SHALL BE SUPPLIED 5 YEARS WARRANTY.
  2. CONTRACTOR TO ADJUST LIGHTING SHIELDS TO MINIMIZE GLARE AND LIGHT TRESPASS TO ADJACENT PROPERTIES.
  3. EACH LIGHTING POLE SHALL HAVE A GROUNDING TERMINAL.
  4. PROVIDE A GROUNDING ROD EVERY TWO POLES.
  5. LIGHTNING RODS TO BE CONNECTED EACH OTHER AND CONNECT WITH EACH POLE DOWN CONDUCTOR.
  6. STRUCTURAL ENGINEER SHALL REVIEW AND APPROVE THE CLASS OF CONCRETE AND SIZE OF CONCRETE BASE.
  7. CONTRACTOR TO VERIFY THE OPENING SIZE AT POLE BASE PLATE PRIOR TO SETTING CONDUIT SLEEVES.
  7. EACH LIGHTING POLE SHALL HAVE A INTEGRATED SENSOR FOR ON/OFF OPERATION. WALL MOUNTED LED LIGHTS TO BE CONTROLLED BY TIME SWITCH OR BY OWNER'S REQUIREMENTS.
  8. CONTRACTOR TO COORDINATE WITH EXISTING PANEL SCHEDULES FOR EXACT CIRCUITING. ADD TWO 20A-1P BREAKERS IN PANEL FOR EXTERIOR PARKING LOT LIGHTING.
  9. CABLE FEEDERS TO EXTERIOR LIGHTING POLES SHOULD BE 2#8+#10G IN 21mmC.

**SCHEDULE OF LUMINAIRES**

TYPE	SYMBOL	PRODUCT DESCRIPTION AND CATALOG NUMBER	VOLTS	WATTS & LAMPS	LUMEN OUTPUT	ACCEPTABLE MANUFACTURERS
P1		SINGLE-HEAD LED LUMINAIRE (EPA 0.8) 106W, 3000K TYPE III OPTICS, C/W PHOTOCELL&SHIELD, 7.5M STRAIGHT STEEL POLE. (WITH LIGHTING SHIELD TO MINIMIZE GLARE AND LIGHT TRESPASS AND TO FACILITATE BETTER VISION AT NIGHT)	120V	106W 1 LAMP	15,230 LUMEN	ATB0 P303 R3

**DRAWING LIST**

DRAWING NUMBER	SHEET TITLE
E1	SITE LIGHTING PLAN, DRAWING LIST AND SCHEDULE OF LUMINAIRES
E2	SITE LIGHTING PHOTOMETRIC, ILLUMINANCE DATA AND TYPICAL LIGHT STAND DETAIL

Project : RIVERWOODS HOMES  
RIVER ROAD WEST  
WASAGA BEACH, ON

Date : JUNE 5, 2020  
Scale : As indicated

Project No : Z2020-040

Drawing No : E1

Drawn : AG  
Checked by : GF

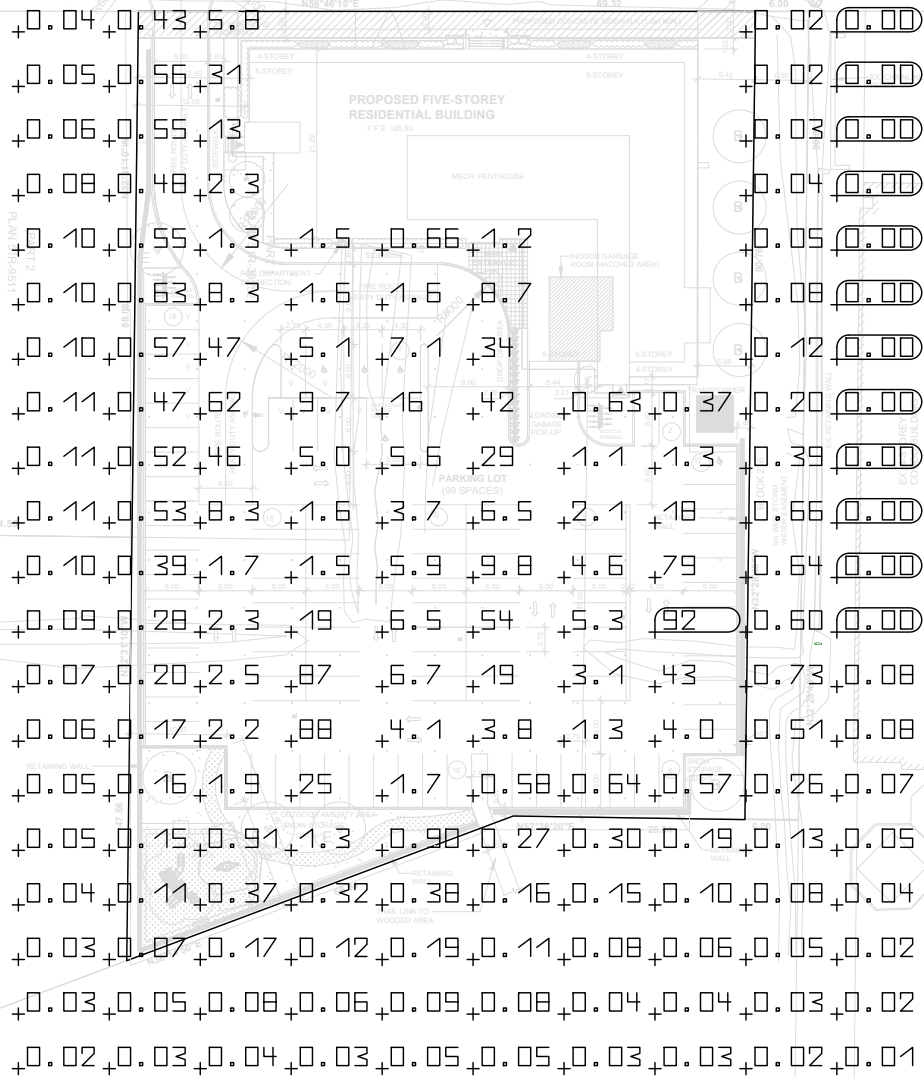
Drawing Name :  
SITE LIGHTING PLAN,  
DRAWING LIST AND  
SCHEDULE OF LUMINAIRES

NO.	Date:	Issues/Revision:	By
4	JUN. 29/22	3RD SUBMISSION TO TOWN	AW
3	JUL. 7/21	2ND SUBMISSION TO TOWN	TS
2	AUG. 7/20	1ST SUBMISSION TO TOWN	SL
1	JUN. 18/20	ISSUED FOR REVIEW	GF

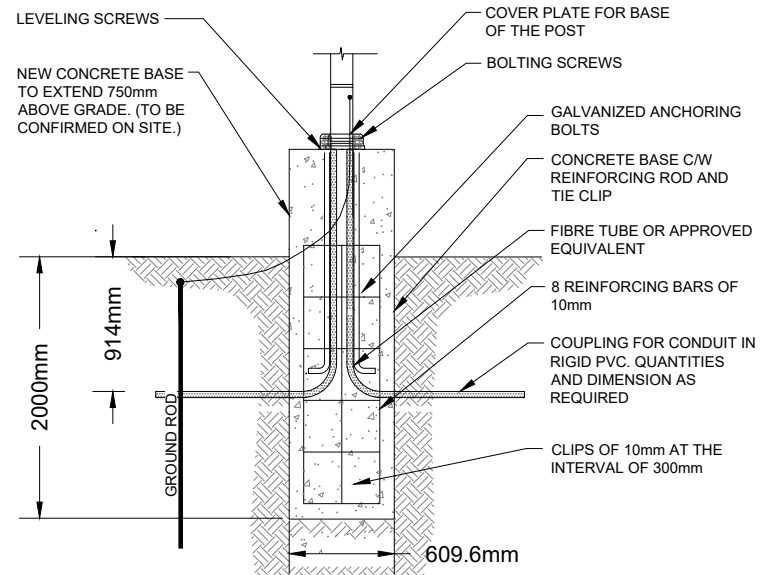
**Ziyutec Inc.**  
Address: # 100-10551 Shellbridge Way,  
Richmond, BC V6V 2L9  
Tel.: 604-370-3361  
Email: info@ziyutec.com  
Website: www.ziyutec.com

**AND ARCHITECTURE INC.**  
3950 14th Avenue Suite 609  
Markham, ON L3R 0A9  
T: 905-604-6960  
www.andarchitecture.ca

KNOWN AS RIVER ROAD WEST RIVER ROAD WEST



1 SITE LIGHTING PHOTOMETRIC  
1 : 600



NOTES:

1. THE TOP OF THE FOUNDATION MUST BE LEVEL.
2. THE CONTRACTOR MUST CHECK THE OPENING DIMENSION OF THE PLATE, FOR THE POST BEFORE INSTALLING COUPLING CONNECTION FOR CONDUIT.
3. CONCRETE BASE: 30MPa CONCRETE, 20mm MAX. AGGREGATED SIZE, 5-8% AIR ENTRAINMENT, 80mm SLUMP. CURING AS PER CAN/CAS-A-23.1-94.
4. POLE SHALL BE C/W BARRIER FOR COMMUNICATIONS/POWER CONDUCTORS AS PER ESA REQUIREMENTS.
5. LIGHT STANDARD SHALL BE C/W 120V, 15A GFCI RECEPTACLE ON BE MOUNTED WITHIN WEATHERPROOF WATERTIGHT ENCLOSURE.
6. EXACT LIGHT STANDARD DETAILS SHALL BE CONFIRMED ON SITE.

2 TYPICAL LIGHT STANDARD DETAIL  
N.T.S.

RIVERWOODS HOME PARKING LOT ILLUMINANCE DATA	
ITEM	ACHIEVED
LOCATION	RIVERROAD WEST, WASAGA BEACH, ON
AVERAGE ILLUMINATION	14.7 LUX
MIN ILLUMINATION	1.01 LUX
MAX ILLUMINATION	92 LUX
UNIFORMITY RATIO	17.2
<b>ILLUMINATION TYPE</b>	
FIXTURE TYPE / WATTAGE	LED / 106W
HEIGHT	7.5m
MODEL	ABT0-P303-R3-3000K

Project No  
Z2020-040

Date :  
JUNE 5, 2020

Scale :  
As indicated

Drawing  
No :  
E2

Project :  
RIVERWOODS HOMES  
RIVER ROAD WEST  
WASAGA BEACH, ON

Drawing Name :  
SITE LIGHTING PHOTOMETRIC  
ILLUMINANCE DATA  
TYPICAL LIGHT STAND DETAIL

	AW	TS	SL	GF	By
4 JUN. 29/22	3RD SUBMISSION TO TOWN				
3 JUL. 7/21	2ND SUBMISSION TO TOWN				
2 AUG. 7/20	1ST SUBMISSION TO TOWN				
1 JUN. 18/20	ISSUED FOR REVIEW				
No.	Date:	Issues/Revision:			



Ziyutec Inc.  
Address: # 100-10551 Shellbridge Way,  
Richmond, BC V6V 2L9  
Tel.: 604-370-3361  
Email: info@ziyutec.com  
Website: www.ziyutec.com



AND ARCHITECTURE INC.  
3950 14th Avenue Suite 609  
Markham, ON L3R 0A9  
T: 905-604-6960  
www.andarchitecture.ca