

2 D2 CONCRETE WALKWAY
TYPICAL DETAIL

TOPSOIL & TERRASEEDING
TYPE 1 - SIMCOE COUNTY NATIVE MIXTURE AS SPECIFIED
ALL DISTURBED AREAS BETWEEN RETAINING WALL AND NATURE RESERVE

1 D2 ROCKERY STONE
TYPICAL DETAIL

3 D1 TOPSOIL & SOD
TOWN OF WASAGA BEACH STANDARD DETAIL

1 D1 DECIDUOUS TREE PLANTING
TYPICAL DETAIL

5 D2 BIKE RACK
NINE (9) SPACES AT THIS LOCATION

TERRASEEDING

LOCATION OF SEED TYPES ARE NOTED ON PLAN

SEED WITH THE FOLLOWING SEED MIXTURES AS SUPPLIED BY ONTARIO SEED COMPANY (1-800-465-5849) OR APPROVED EQUAL

TYPE 1 FOR ALL DISTURBED AREAS BETWEEN THE RETAINING WALL AND NATURE PRESERVE

8150 - SIMCOE COUNTY NATIVE MIXTURE

- BLACK EYED SUSAN (*Rudbeckia hirta*) 12%
- CANADA GOLDENROD (*Solidago canadensis*) 4%
- CANADIA WILD RYE (*Elymus canadensis*) 20%
- COMMON MILKWEED (*Asclepias syriaca*) 5%
- INDIAN GRASS (*Sorghastrum nutans*) 20%
- LITTLE BLUESTEM (*Andropogon scoparius*) 15%
- NEW ENGLAND ASTER (*Aster novae-angliae*) 2%
- SAND DROP SEED (*Sporobolus cryptandrus*) 20%
- SMOOTH BLUE ASTER (*Aster laevis*) 1%
- WILD BERGAMOT (*Monarda fistulosa*) 1%

SEED RATE: 25 kg/ha (23 lbs/acre)

A. NURSE CROP

ANNUAL RYE GRASS (*Lolium multiflorum*)
SEED RATE: 22kg/ha (21 lbs/acre)

(SEED MIX AND NURSE CROP MAY BE TERRASEEDED TOGETHER)

10 D2 DECORATIVE METAL FENCE
TYPICAL DETAIL
1200 MM HIGH
SURFACE MOUNTED ON TOP OF WALL

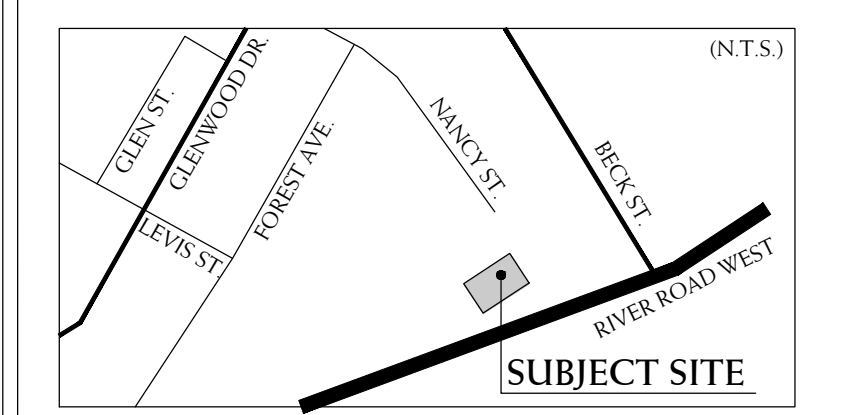
9 D2 PLAY AREA WITH FIBRE SURFACE
TYPICAL DETAIL

8 D2 SWING
TYPICAL DETAIL

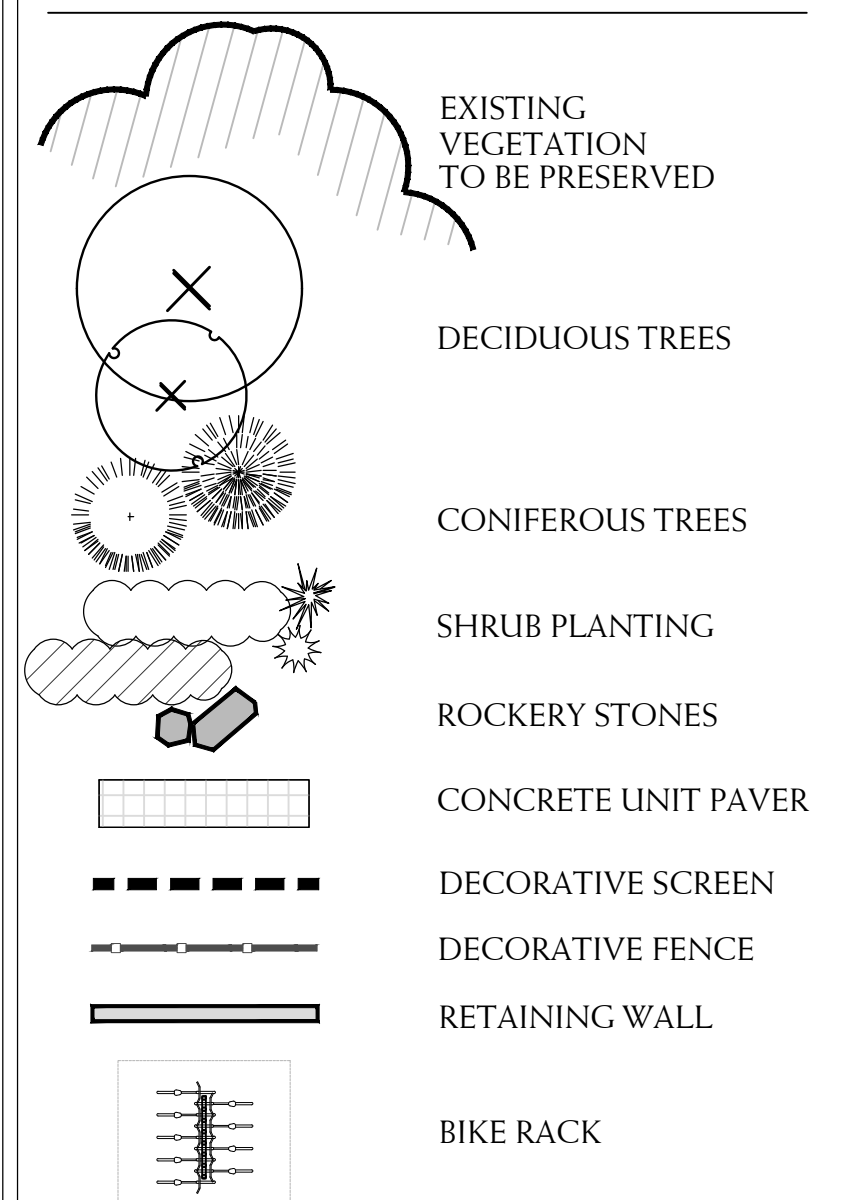
7 D2 PLAY STRUCTURE
TYPICAL DETAIL

6 D2 BENCH
TYPICAL DETAIL
IN GROUND MOUND
MINIMUM 75mm FIBRE COVER OVER FOOTINGS

KEY PLAN



LEGEND



BASE INFORMATION OBTAINED ELECTRONICALLY FROM AND ARCHITECTURE INC. (JOB NO. 18026, TEL. 905-604-6966)

no.	date	version	by
4	SEPT. 22 2022	ISSUED FOR THIRD SPA SUBMISSION	AV/ED
3	DEC 7 2021	ISSUED FOR SECOND SPA SUBMISSION	SO/LB
2	AUG 21 2020	ISSUED FOR ZONING & SPA SUBMISSION	RS/AV
1	JUN 31 2020	ISSUED FOR CLIENT REVIEW	LK/RS

All information hereon to be checked and verified at the site and any discrepancies must be reported to and clarified by the landscape architect before commencing work. All drawings, specifications, details, digital information, etc., prepared by the landscape architect are instruments of service and as such are his property and must be returned at his request.

ALEXANDER BUDREVICS
& ASSOCIATES
LANDSCAPE ARCHITECTS

895 Don Mills Road, Second Tower, Suite 212
Toronto, Ontario, Canada, M3C 1W3
416.444.5201
www.budrevics.com

project
RIVERWOODS HOMES
RIVER ROAD WEST
WASAGA BEACH, ON
WASAGA RIVERWOODS HOMES INC.

LANDSCAPE PLANTING PLAN

date JUNE 4, 2020 drawn RS
scale 1:200 file 3383 L1 V6-220922

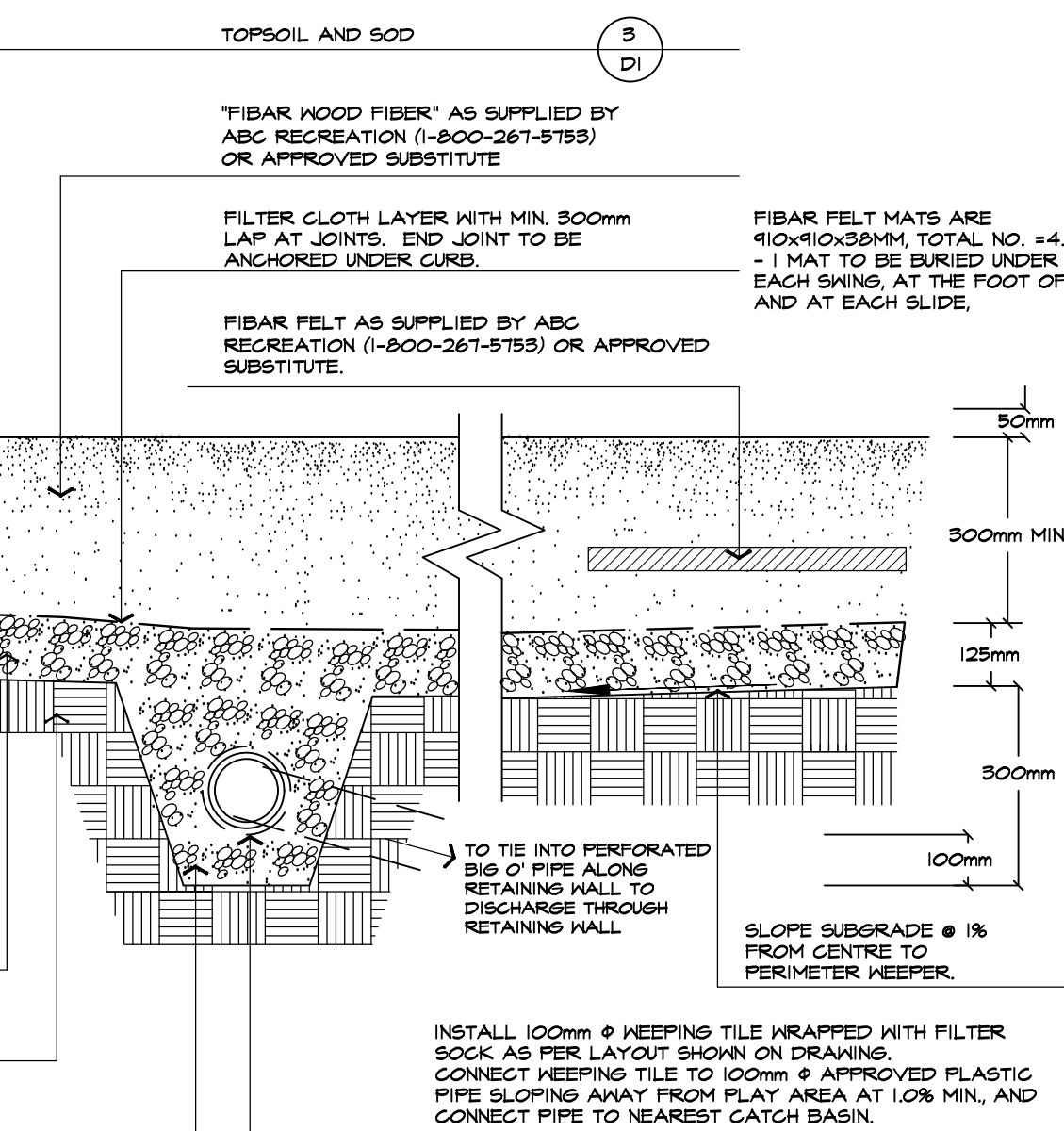
direction project no. 3383
sheet no. L-1

*NOTED SCALE IS APPLICABLE ONLY WHEN PRINTED ON ARCH D (34"x36") SIZE SHEET



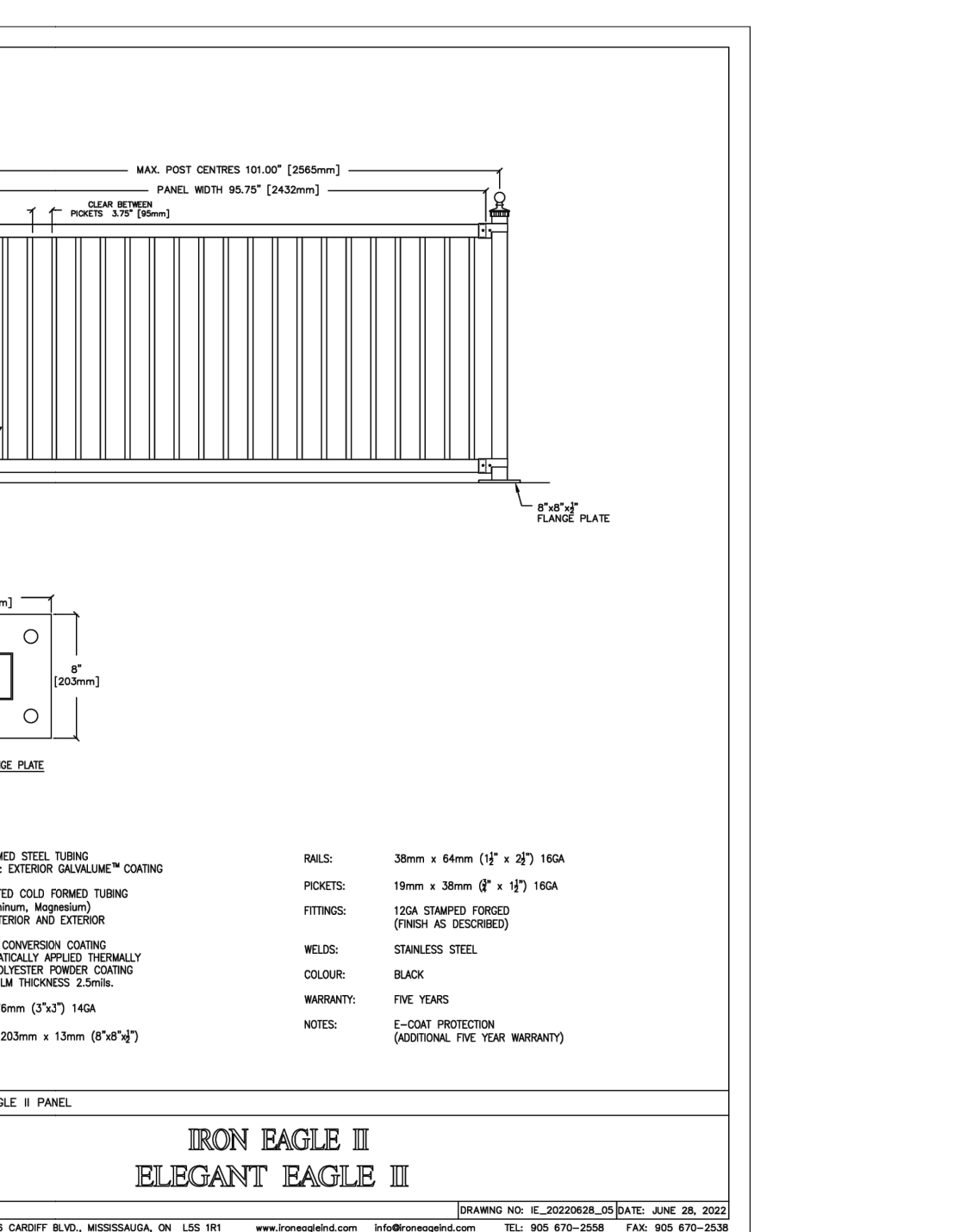
8 SWING
MANUFACTURER: JAMBETTE

PRODUCT: ETNA TRAPP-I - 0X-01064
COLOUR: TO BE APPROVED BY CLIENT & LANDSCAPE ARCHITECT PRIOR TO ORDERING



9 PLAY AREA WITH FIBRE SURFACE DETAIL
NTS

ABAL C105x-220617



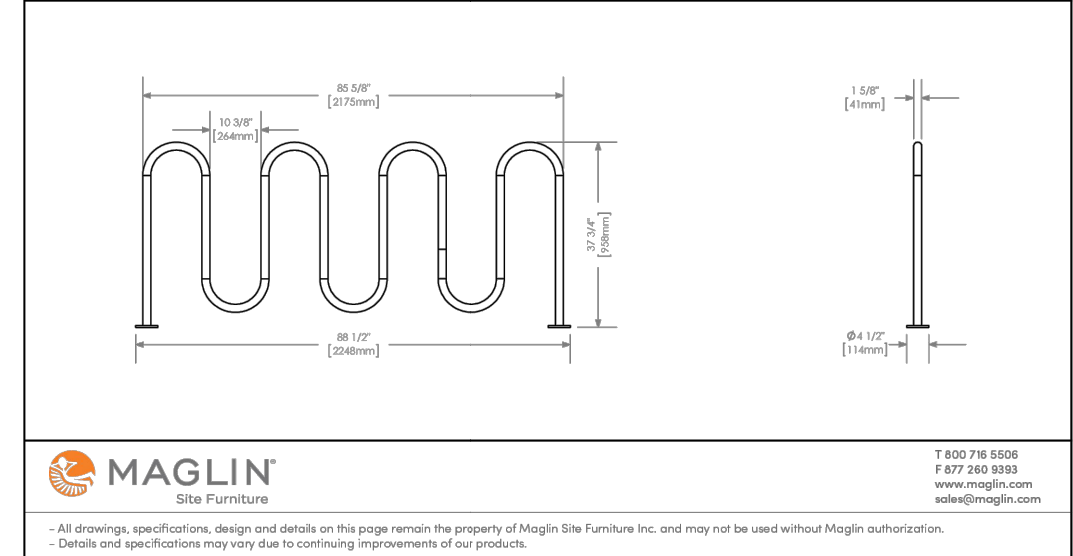
10 DECORATIVE METAL FENCE
MANUFACTURER: IRON EAGLE

PRODUCT: ELEGANT EAGLE II
COLOUR: TO MATCH BUILDING FEATURES OR BLACK POWDERCOAT
HEIGHT: 1200 MM

400 SERIES
MBR-0400-00015
Legacy # MBR400-9-S

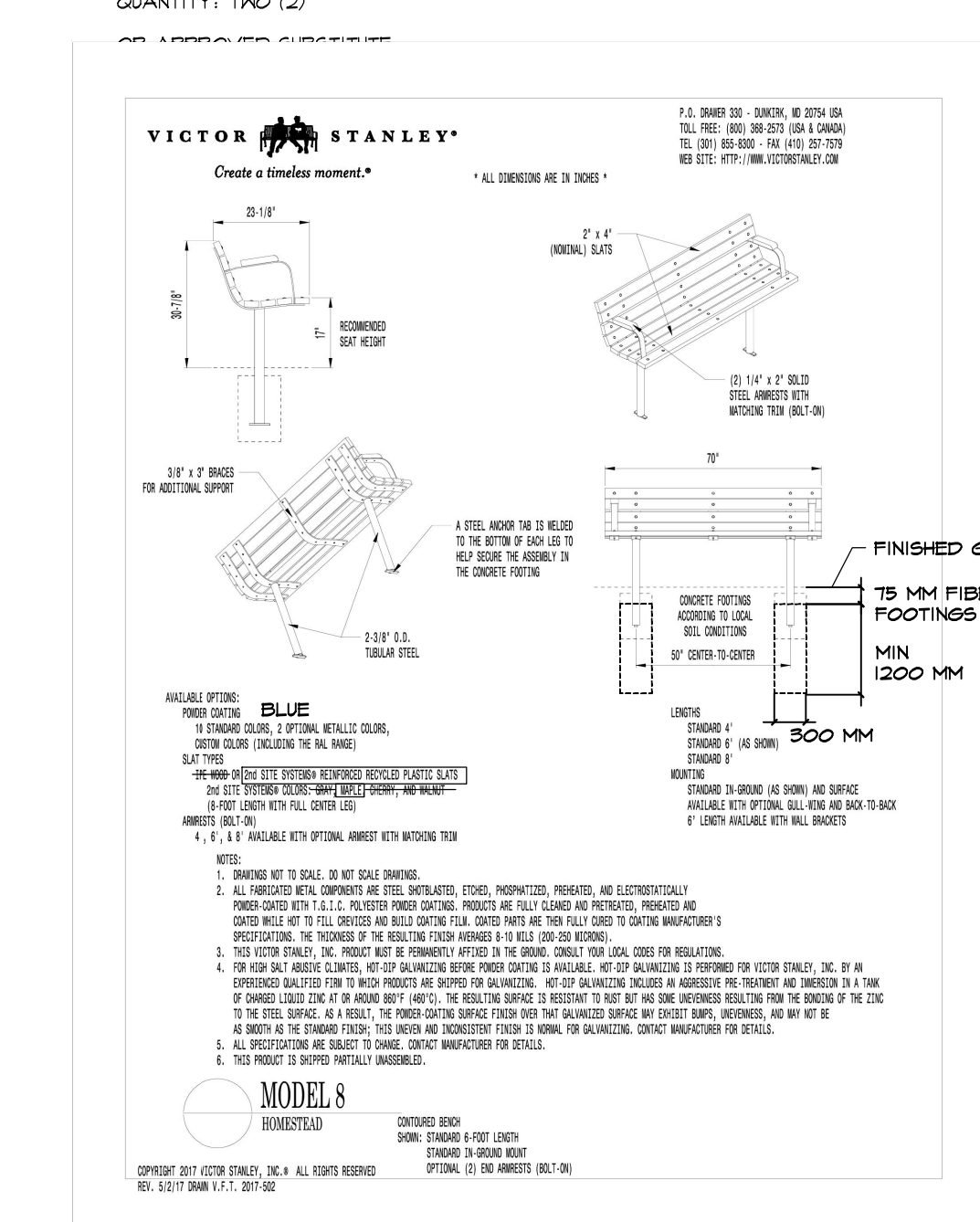
Sustainability Facts	
Unit Size	One (1) 400 Bike Rack
Carbon Footprint (CO ₂ e)	138 138 kg CO ₂ e
Total energy use (TUE)	2240 4340 MJ
Water use (WU)	1.06 2 m ³ water
Material recyclability	100%
LEED v4.1 Credits	
Type II Environmental Product Declaration	✓
Material Inventory	✓
Low VOC finished	✓
Free of Red List substances	✓

DESCRIPTION: 400 Series - 400 Bike Rack: H.S. Steel Tube, Surface Mount, 9 Bike Configuration
FINISH: All steel components are protected with E-Coat anti-rusting. The Maglin Powdercoat System provides a durable finish on all metal surfaces.
INSTALLATION: The bike racks are delivered pre-assembled. It is available with a surface mount installation.
TO SPECIFY: Select MBE-0400-00015
Choose: Powdercoat Color



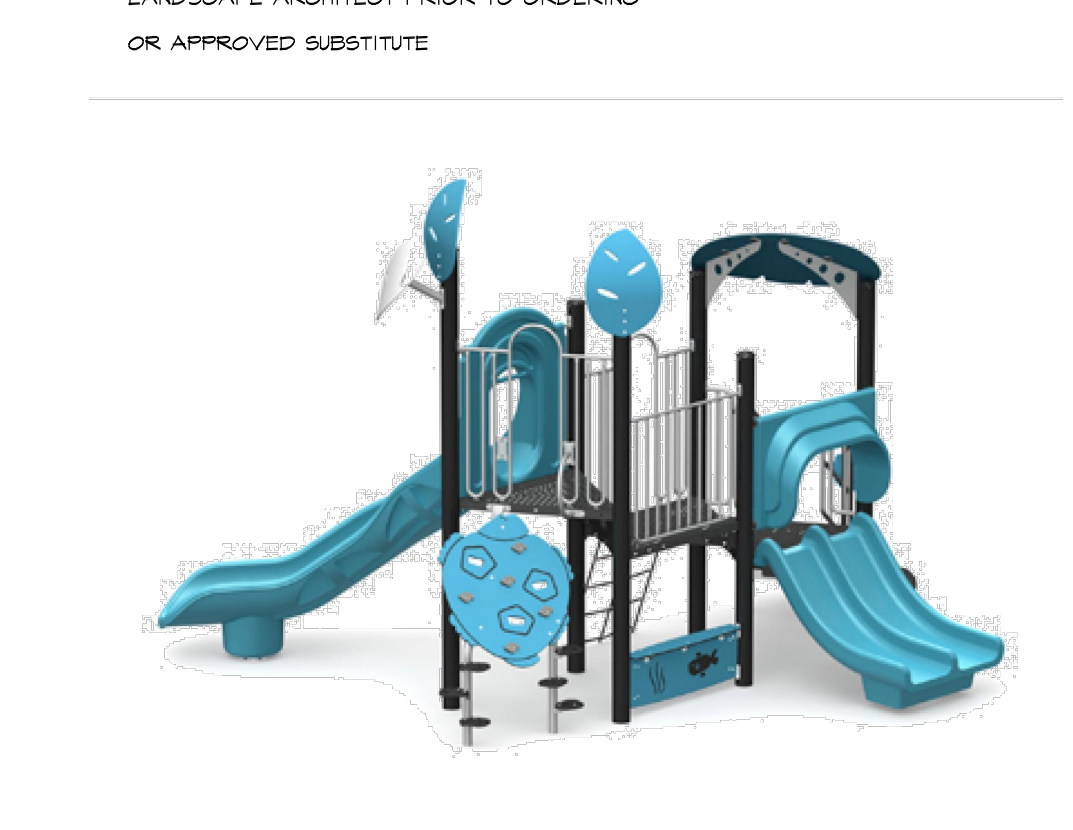
5 BIKE RACK
MANUFACTURER: MAGLIN

PRODUCT: MBR-0400-00015 400 SERIES
COLOUR: GUNMETAL FINE TEXTURE
QUANTITY: TAG (2)



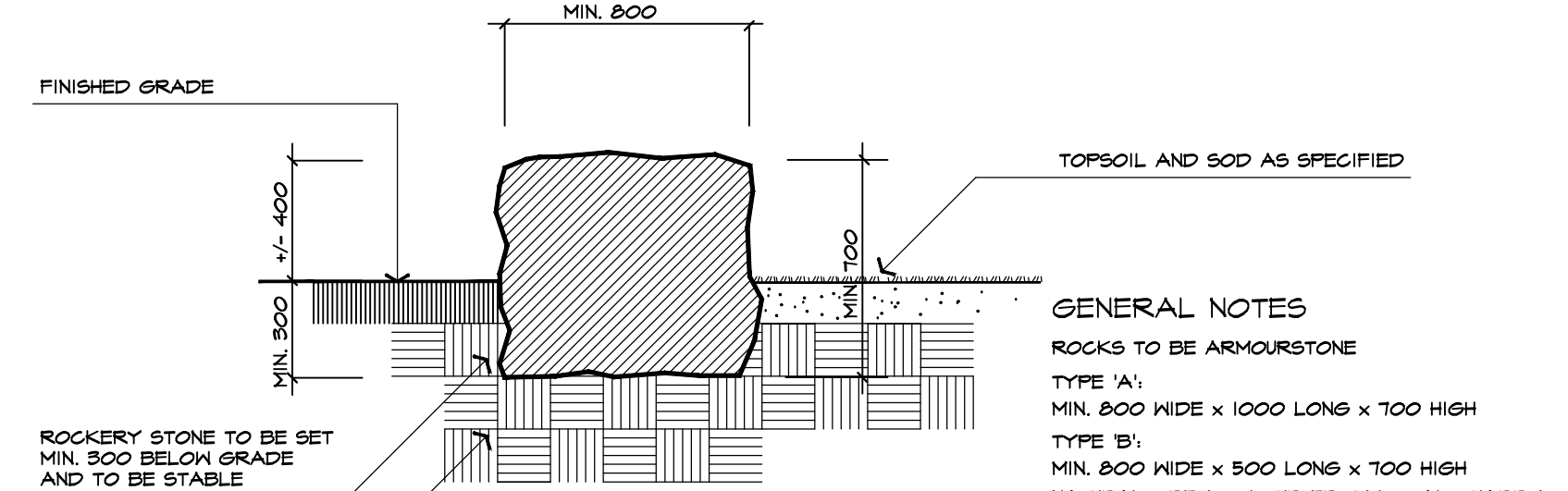
6 BENCH - DIRECT BURIAL
MANUFACTURER: VICTOR STANLEY

PRODUCT: MODEL 8 CONTOURED BENCH
MATERIAL: REINFORCED RECYCLED PLASTIC SLATS
COLOUR: TO MATCH PLAY STRUCTURE - TO BE APPROVED BY CLIENT & LANDSCAPE ARCHITECT PRIOR TO ORDERING
OR APPROVED SUBSTITUTE



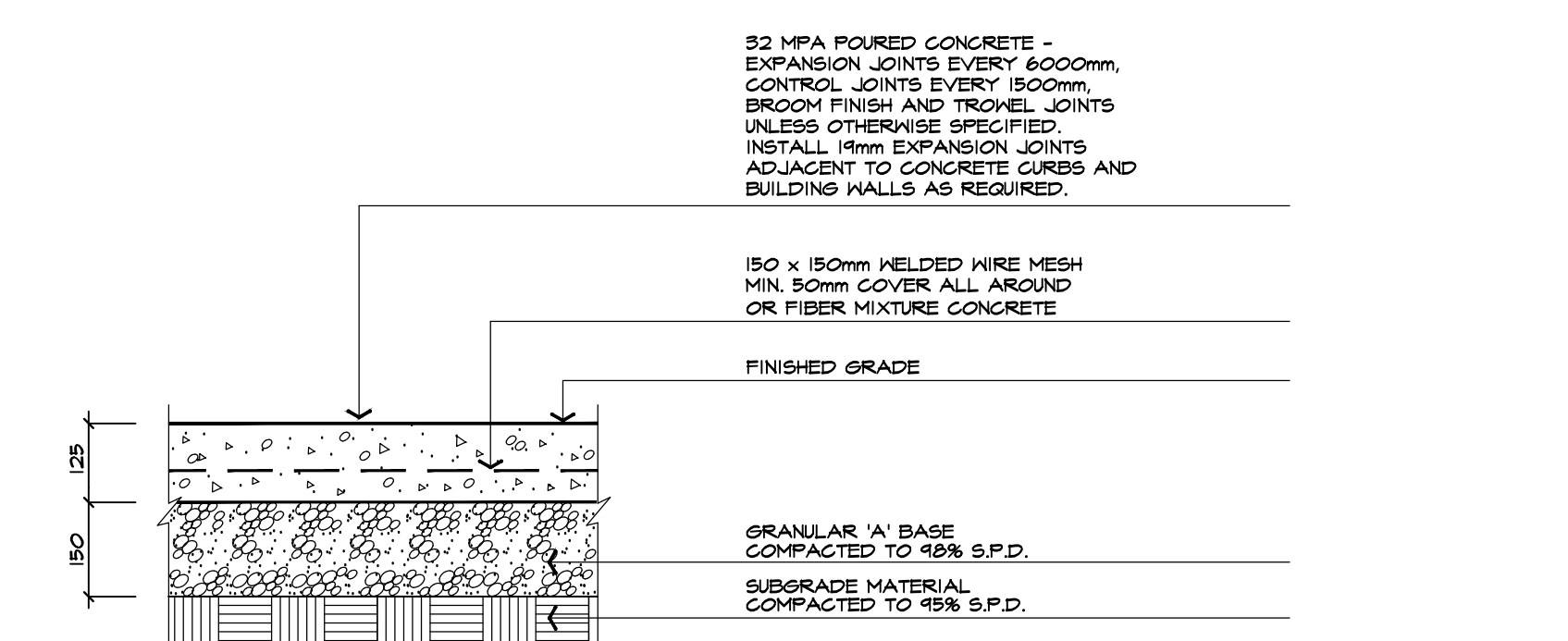
7 PLAY STRUCTURE
MANUFACTURER: JAMBETTE

PRODUCT: PLAYSTRUCTURE - JS-22310-3HA
COLOUR: TO BE APPROVED BY CLIENT & LANDSCAPE ARCHITECT PRIOR TO ORDERING



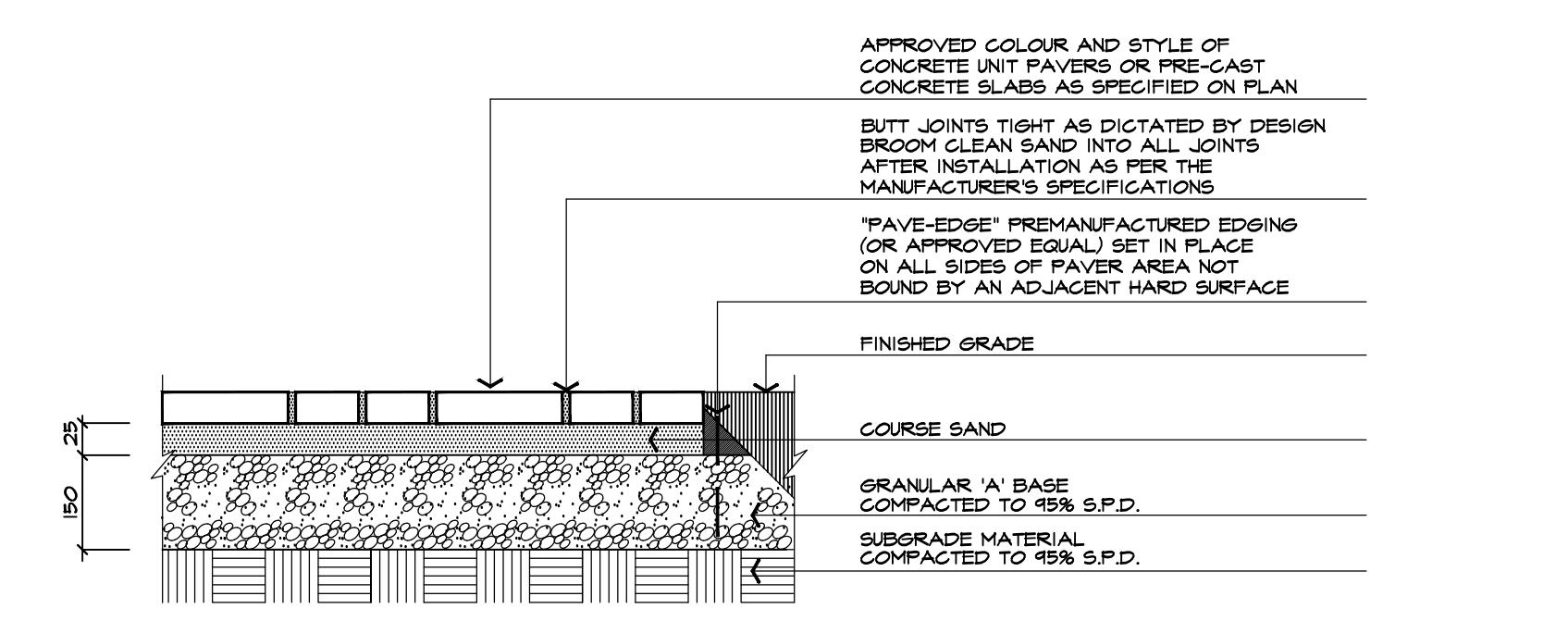
1 ROCKERY STONE DETAIL
SINGLE TIER AT GRADE

NTS
ABAL R201X-180502



2 CONCRETE WALKWAY DETAIL
TYPICAL INSTALLATION

NTS
ABAL H201-000524



3 CONCRETE UNIT PAVES DETAIL
TYPICAL INSTALLATION

NTS
ABAL H301-010613



4 WOOD SCREEN DETAIL
TO FUTURE DETAIL

NTS

no.	date	version	by
4	SEPT. 22 2022	ISSUED FOR THIRD SPA SUBMISSION	AV/ED
3	DEC 7 2021	ISSUED FOR SECOND SPA SUBMISSION	SO/BL
2	AUG 21 2020	ISSUED FOR ZONING & SPA SUBMISSION	RS/AM
1	JUN 31 2020	ISSUED FOR CLIENT REVIEW	LK/RS

All information hereon to be checked and verified at the site and any discrepancies must be reported to and clarified by the landscape architect before commencing work. All drawings, specifications, details, digital information, etc., prepared by the landscape architect are instruments of service and as such its property and must be returned at his request.

ALEXANDER BUDREVICS
ARCHITECTS
LANDSCAPE ARCHITECTS

885 Don Mills Road, Second Tower, Suite 212
Toronto, Ontario, Canada, M3C 1W3
416.444.5201

www.budrevics.com

project
RIVERWOODS HOMES
RIVER ROAD WEST
WASAGA BEACH, ON
WASAGA RIVERWOODS HOMES INC.

drawing
LANDSCAPE DETAILS

date	JUNE 4, 2020	drawn	RS
scale	AS SHOWN	file	3383 D2 V6-220922
direction		project no.	3383
		sheet no.	D-2

*NOTED SCALE IS APPLICABLE ONLY WHEN PRINTED ON ARCH D (24"x36") SIZE SHEET